

# Mohegan Pequot Model Railroad



## The News for: March 2007

### M&P Membership and Newsletter

The Club is trying to expand and to have more member participation. We will have a Club table at the Cheshire show on March 4 to sell Club cars and apparel and to recruit new members. Jim Spavins and Al Mayo will be behind the table. The work required to make all of the Club HO modules 100% reliable and cosmetically perfect is still a ways off. We need your help to do so. The G, N and On3 Club layouts are also in need of your help. After all, it's fun. That's why you are in/into model railroading.

We also want to be better organized and accountable. If you have not paid your dues for 2007, this is the last Newsletter that you will receive. Check with the Secretary, Bob Applegate, if you have any doubts about whether you have paid your dues for this year or not and if your email address is accurate. Remember, if you can receive the Newsletter electronically it saves the Club about a dollar a month.

### LOST AT SPRINGFIELD!

If anyone picked up a set of six very small files in a blue plastic pouch, John Waller is missing same. If you have them email John at [john.waller@snet.net](mailto:john.waller@snet.net) or phone him at 860-564-3114.

### Free for the Taking

There are a number of module sections (Old Staging) at Larry's that are available for members to take and use for their own layouts or other personal projects. They are either 2x4 or 2x8, and some have legs and some do not. Stu Dom's has two eight foot modules and Jim Spavins has a four foot

module of part of the Connecticut River RR Bridge to give away also. Contact Stu or Jim about their modules or Dan DeLany or one of the other officers if you are interested in the ones at Larry's house. We are in the process of doing a post Springfield cleaning and reorganization of Larry's basement and the modules will be disposed of next month if no members express an interest in taking them.

### Transition Module Update

Officially this project has been completed and is now in the operations and maintenance phases. It has an electrical glitch which will be rectified at the Club Work Sessions on Wednesday nights.

### Field Trips

Talk to Jim Delany, our field trip coordinator, (889-4029) anytime (see Member News) about your ideas for future trips.

### Extracts: January Meeting Notes

(from John Waller's notes)

#### **February 25 at Bill Library**

Members present: 17.

No, Bill Evans does not count for two and he is not Al Mayo's dad!

Bob Murphy; A meeting was held on February 11, followed by an operating session. This was very successful and should be repeated, hopefully, more frequently than once every five years.

Springfield This went well considering all of the new modules which were introduced. Radios still need some work. The "Galileo was right" experiment turned out to have not

**Lotsa Train Shows This Month and Next. See the Calendar.**

caused as much damage as at first feared, Don reported. Nevertheless, there must be no opportunity for it to recur. Control of trains from each module was lacking; this should be put right by next year. The new transition module was not fully functional and there were not enough trains out at any given instant. The G-scale sounds were very realistic. There was still a number of tickets problem. There was a sense that there were fewer dealers this year but more manufacturers. Modules need distinctive names instead of transition and passenger. Upcoming shows: Old Lyme Christ the King 14/15 April. Setup Saturday April 14 running by 5 PM to catch those attending vigil Mass. Operate and breakdown Sunday April 15. Willimantic April 22.

#### **Work required and related matters**

Members are encouraged to take home retired modules. The Club is keeping the Timesaver for the time being.

Stu will make a new 4' lift bridge; meanwhile the old one will be needed.

Stu wants to eventually get rid of his 16' module; he doesn't want two sets of modules on his hands.

We need to make use of the Club show board already paid for and constructed.

Standards of Club attire at meetings seem to have fallen by the wayside.

**Cheap source of HO-scale cars**\_Members might still find cars at Wal-Marts at a price about 1/3 that at Walthers.

**Other matters**\_This Newsletter will be the last under the 2006 mailing list. **Pay your dues please!!**

Stu is considering taking orders for super-light-weight car boxes for other Club members.

**Future meetings**\_Sunday March 11, 5 PM at Larry's. Sunday March 25, 7:30 PM at Bill Library. Work sessions continue at Larry's Wednesday evenings; Sundays by consensus.

## *Movers and Shakers*

### Member News

Here is where we actually try to communicate with our fellow Club members

and those who might want to join us. Do you need some help with a model railroading problem, have expertise to share or just want to get out in the world more? Then let it be known in the Club newsletter.

### Jim Delany Retires. Stu Dom to Follow

Jim Delay retired at the end of January to devote full time to model railroading. Stu Dom will join him by the middle of March. No more excuses about "I haven't got the time." guys!

### The President's Corner

For this month?

*Dan*

### The VP's Niche

See Technical Section

### John Waller's Column

It seems to me that the core group of our Club is shrinking in size, and not getting any younger. At the same time, our HO layouts are getting bigger. This week Jim Spavins Jr. produced plans to implement the Fostoria multiple crossings (Iron Triangle). Fortunately the hundreds of bolts in the real thing scale down to none in HO.

There are capabilities in the passenger station, for example, not being used, and two not yet fully implemented namely, electrically actuated uncouplers and walk-round throttles. I can't see Larry using either of these facilities while flitting back and forth between the passenger station and the main inner and outer bus control.

Sure it is fun, and part of model railroading, to draw up plans of possible future modules and layouts. It is fun to see a module take shape and start to work. Nobody could see any of our layouts in any of our scales and not be impressed with our technical and artistic ability.

The hobby is so open ended there are more things that we could do than shake a stick at.

Members are looking at my 16' module and wondering where all the scenery is. I was quite firm when I first mooted my module that it will take a few years. I have

**Lotsa Train Shows This Month and Next. See the Calendar.**

done a very small bit of scenery, which nobody noticed!

There are very distinct phases in my plan, and scenery is part of it. The current phase, nearly complete, is to fit all the turnouts in the yard with dwarf signals. There are 18 turnouts all up, with 12 in the yard.

Eight of the yard turnouts form four double-slip pairs. Each double-slip pair requires four dwarf signals to guard the four ways the pair can be set. Each signal has red, yellow, green "searchlights", actually LED's.

The remaining four turnouts are simple with each one requiring three dwarf signals, each with two LED's.

The total number of LED's thus comes to 72!

The 18 turnouts are controlled from six microcontrollers (3 each), which receive the user requirements for track use, and set turnouts accordingly, as explained in this column some time ago. Apart from a common set of user requirements, each microcontroller acts independently.

The next step, and a very important one, is to connect up a data (I<sup>2</sup>C) bus between the six microcontrollers acting as slaves, and an I<sup>2</sup>C master microcontroller. The master then knows everything there is to know about all the turnouts and will override the user settings where appropriate for safety.

This is the principle I used on my 8' module.

Meanwhile, scenery will be progressed. Bear in mind the passenger station had no scenery for the first five (?) years of its existence.

*John*

## Letters to the Editor

Enquiring minds want to know!

## The Market Place

### Club Member Ads

Advertise (free) here to reach more than seventy model railroaders eagerly waiting to buy your wonderful stuff. (Editor's Note:

Let me know when your item sells or when you want to stop running the advertisement.)

### **Received by Dan Delany**

Hi Dan: I am interested in selling my father's collection of GARDEN gauge model railroad cars and track. I can sell it as a complete collection or I can sell individual or groups of cars. Below is a detailed list (prepared a few years ago) of G gauge trains, most in manufacturer's boxes. Most in excellent or very good condition. Some have not been run at all. The track is all in good condition. Much of the track is curved track. I live in Chappaqua, NY. Thanks, Bill Feldman. 914-238-6272

G Gauge trains: REA: 21102 Rogers 2-4-2 Motorized steam locomotive, Southern Pacific Diesel #1, Southern Pacific Diesel #2, diesel Southern Pacific, Virginia & Truckee passenger car, The Royal Blue passenger car, 46202 Boxcar, 46005 Boxcar, 46501 Piggy back flatcar, 46207 Pluto Water, 12105 Caboose, 41102 Gondola, 46204 Box car, Mobil Gas tank car, 4240 Mobil tank car, 21901 Tender, 31004 Coach, 46007 box car, 42104 caboose, 31001 Flat car, 42106 caboose, 31002 Pennsylvania passenger car, 41002 gondola, 46008 box car, Bordens Boxcar, B&O Box car, Pennsylvania passenger car, 41001 Gondola #1, 41001 Gondola #2, box car, 46201 reefer, 46009, 46502 flat car, 46204 reefer, 46250 reefer, 46006, 46011, Coca cola box car, Coke boxcar 4291..LGB: 2018-d locomotive and tender, 2085 engine, 3019 European Box Car, 4050 flat car with pipe, 4168 gondola, 43710 Queen Mary caboose.. AristoCraft: diesel engine #1, diesel engine #2..Bachmann: tank car, Quaker State tank car, Mobil Gas..LOTS OF TRACK, much of it curved.

I own but am not currently including on my "For Sale" list, one each: LGB 2156 S Santa Fe Diesel in Queen Mary series. REA NY Central diesel #1, NY Central diesel #2 NEW HAVEN diesel.

### The Club Store

Complete inventory of "stuff" to be done after the Springfield show. Sure?!

**Lotsa Train Shows This Month and Next. See the Calendar.**

Commercial Corner

The Technical Section

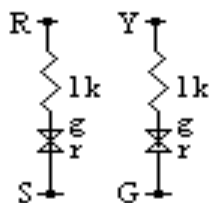
Contributions are welcome. You can write about anything from prototypes and history to model railroads, scenery, electrical, bench work, model building and more are all of interest to the club members.

**Stuff That's in the Newsletter**

By John Waller

A Club member recently remarked that technical information should be made available to members. I said that there is stuff published in the Newsletter. The response was: "Oh, maybe I should read the Newsletter!"

One piece of information recently published is worth repeating. It is very useful on the HO layout to be able to tell if the inner and outer buses are up or down, especially when you are so far away on the HO layout you need to allow for the curvature of the earth.



I used green/red two-wire LEDs with green showing for normal operations and red if backing up. To use separate LEDs just wire them in parallel, with the anode of one connected to the cathode of the other, and vice-versa.

The capital letters show connections to the harness (S = slate or gray).

The convention on DC two-rail track is that: looking at a train going away from you, the positive rail is on the right.

I recommend that this indicator, which draws no more than 20 mA total, be fitted to all modules, whether they are able to control main traction power or not.

World Wide Web

Still NMRA's website of the month!

The Life Section

Bobbye Hall and Bruce Walthers pass this weekend January 29, 2007



**Bobbye Hall**

Bobbye Hall and Bruce Walthers, two well-known names in the model railroad industry, passed away this weekend.

Hall, 97, former owner of Hall's Hobby House and Hallmark Models in Dallas, Texas, died on January 27.

Hall and her husband, Buddy, took a former ice cream parlor north of downtown Dallas and converted it into her hobby shop, which she operated for 55 years. She was the first woman to successfully work with Japanese model railroad manufacturers, and in 1967, started Hallmark Models, which offered an exclusive line of brass locomotives and cars of southwestern U.S. railroads imported from Japan and Korea. In 1996, Hall was inducted into the Model Railroad Industry Association's Hall of Fame, and she received the National Model Railroad Association's Pioneers of Model Railroading award in 1997. Hall's autobiography, Tracks from Texas to Tokyo, was published in 2006.



**Bruce Walthers**

Walthers, 87, chairman of the board and former president of Wm. K. Walthers, Inc., in Milwaukee, Wis., died on January 28.

In 1958, Walthers became president of the model railroad manufacturing firm his father, William K. (Bill), started 26 years earlier. Under Bruce's leadership, Walthers became the largest distributor of model railroad products in the world. During his 60-year career, Bruce was a board member and president of both the Model Railroad Industry Association and the Hobby Industry Association of American (HIAA). The HIAA awarded Bruce its highest honors, the Meritorious Award of Honor and Lifetime Membership in recognition of his years of service and contributions to the hobby. Bruce transferred the family business to his son, Philip, in 1984, but remained active in the company as chairman of the board.

## Railroad Calendar

### This Busy Month in 2007

**March 7, 14, 21 & 28, North Stonington CT.** Work sessions at Larry Southwick's house starting at 7:00

**March TBD, Sunday; North Stonington, CT** All-day work session by consensus at Larry Southwick's house starting 10:00ish.

**March 11, North Stonington CT.** Meeting at Larry Southwick's house at 5:00 PM. Probably a work session day.

**March 4, 2007, Cheshire, CT.** Cheshire High School 10 AM - 3 PM for Cheshire Band Association Contact: Thomas J. Kotulski, 54 Old Lane Rd, Wallingford, Ct. 06492 (203) 265-7527

**March (TBA) 2007 Fairfield, CT.** Station Stop Train Show -Ludlowe Middle School 10 AM-4 PM, Housatonic R/R Club, Contact: (203) 255-3795 Friday 7-10 PM or [www.housatonicmr.org](http://www.housatonicmr.org)

**March 18, 2007, Warwick, RI** NMRA-NER, Model Railroad Show West Warwick Civic Center - Little Rhody Division Show 10 AM-3.30 PM

**March 24/25, Wilmington, MA** Greenberg Great Train Expo -Shriners Auditorium, 10 AM - 4 PM, Greenburg Shows

**March 25, Ledyard, CT** M&P Meeting at the Bill Library starting at 7:30PM.

**March 25, 2007 Hingham, MA.** South Shore Country Club & Open House 10 AM-4 PM, Bare Cove Park, Building 51

## Next Month and Beyond

**April 14/15, 2007, Old Lyme, CT** Christ the King Church. Setup M&P HO layout on Saturday April 14; running by 5 PM to catch those attending vigil Mass. Operate and breakdown Sunday April 15. Times TBD. POC; Bill Paradis.

**April 15, 2007, Shelton, CT** Old Shelton Intermediate School Perry Hill Road 10 AM-3 PM, Barry Howard (Hobbies) at (203) 732-7346

**April 22, 2006, , Willimantic, CT** - Eastern Connecticut Chapter NRHS Windhan High School 10 AM-3 PM. M&P HO layout will operate. Contact Joe Sokol at 1170 Hartford TPK #E-51 Vernon, CT 06066-4537

Ron Pothier's 2006 list of train shows is available from him at [repth@snet.net](mailto:repth@snet.net).



Lotsa Train Shows This Month and Next. See the Calendar.

## Club Administration

M&PMRR Officers & Functionaries

**The President Dan DeLany** 860 748-7581

**Vice President John Waller** 564-3114

**Treasurer Don Counsellor** 739-6381

**Secretary Robert Applegate** 464-2118

Storekeeper **Larry Southwick** 535-2996

Field Trips **Jim DeLany** 889-4029

Newsletter Editor **Clark Pritchett** 444-1884

Newsletter Mailing, Meeting Speakers and

Bulk Purchases **Bill Evans** 267-9482

New Passenger Modules, Name Tags and

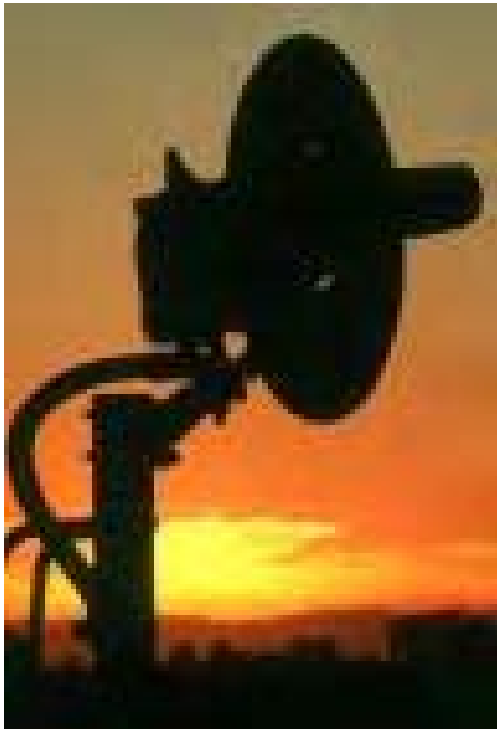
Show Layouts **Stu Dom** 536-7637

Webmaster **Jim Spavins**

[jimspav@alum.rpi.edu](mailto:jimspav@alum.rpi.edu)

Prototype Questions Dave at

<http://www.davesrailpage.com/>



Sunset Signal

**CSX**  
CORPORATION

## The Lighter/Heavier Side

### **Talking Dog For Sale**

A man sees a sign, "Talking Dog for Sale". He rings the bell and the owner tells him the dog is in the backyard. The guy goes into the backyard and sees a Labrador retriever sitting there.

"You talk?" he asks. "Yep," the Lab replies. "So, what's your story?" The Lab looks up and says, "Well, I discovered that I could talk when I was pretty young. I wanted to help the government, so I told the CIA about my gift, and in no time, they had me jetting from country to country, sitting in rooms with spies and world leaders because no one figured a dog would be eavesdropping. I was one of their most valuable spies for eight years running."

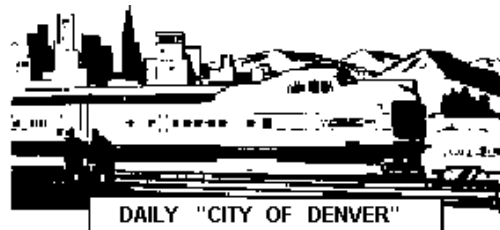
"But the jetting around really tired me out, and I knew I wasn't getting any younger so I decided to settle down. I signed up for a job at the airport to do some undercover security, wandering near suspicious characters & listening in. I uncovered some incredible dealings and was awarded a batch of medals. I got married, had a mess of puppies and now I'm just retired."

The guy is amazed. He goes back in and asks the owner what he wants for the dog.

"Ten dollars," the guy says.

"Ten dollars? This dog is amazing. Why on earth are you selling him so cheap?"

"Because he's a liar. He never did any of that stuff."



**Lotsa Train Shows This Month and Next. See the Calendar.**